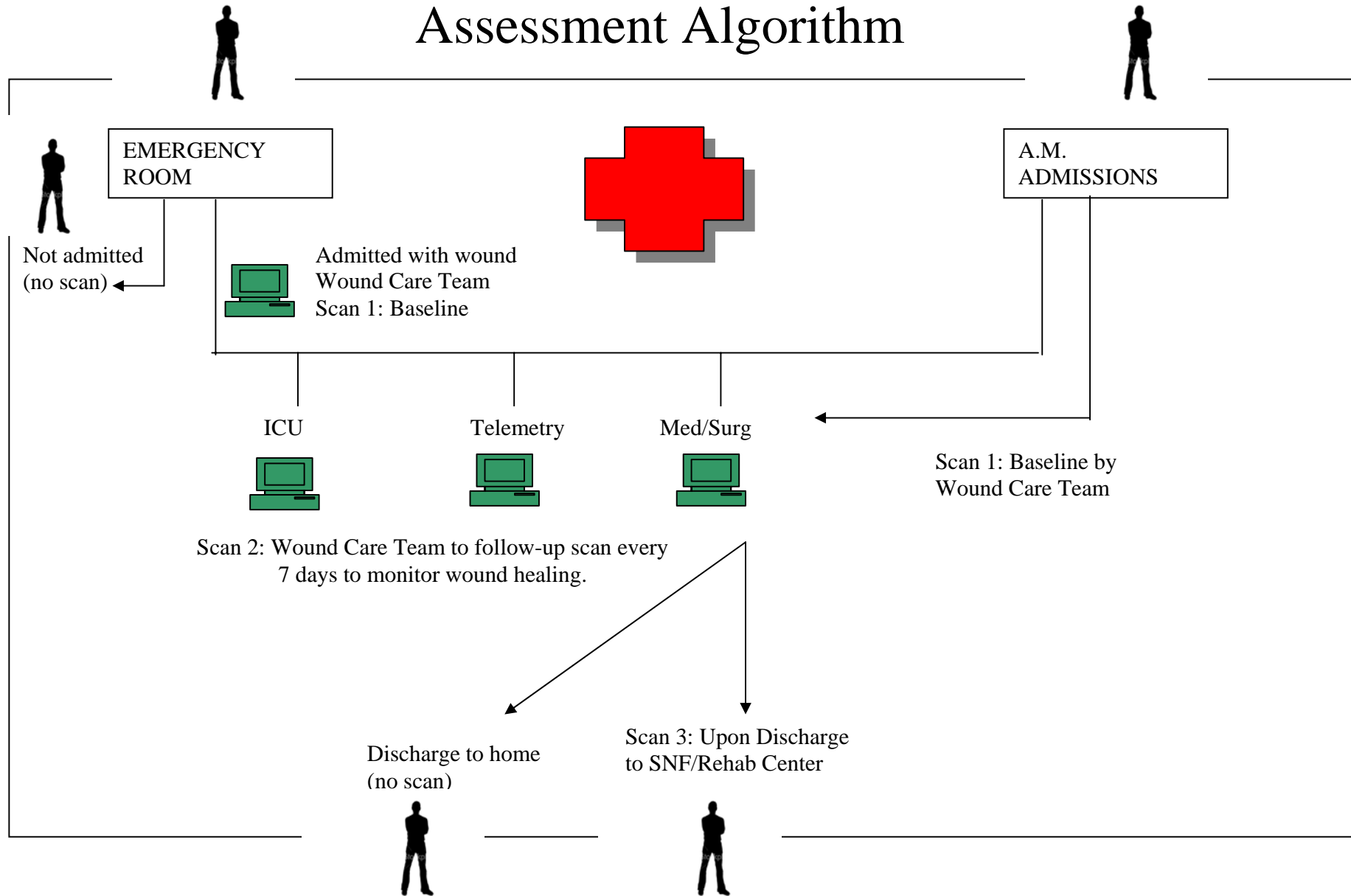


# Acute Care Wound Assessment Algorithm



Longport, Inc.'s high frequency ultrasound technology, the EPISCAN I-200, can be incorporated into Acute Care for the assessment of wounds. It provides a source of documentation for the monitoring of wound healing.

## EMERGENCY ROOM

- Patient admitted with wound to ICU, Telemetry, Medical/Surgical floor. (**Wound Care Team to scan – Baseline**).
- Patient admitted with wound to Pediatrics. (**Wound Care Team to scan – Baseline**).
- Patient admitted for emergency surgery. (**No scan needed until initial post-op period**).
- Patient discharged to home (**No scan needed**).

## ICU

- Patient with wound having Baseline Scan in Emergency Room now in ICU for *short duration*. (**Re-scan in 7 days**).
- Patient with wound having Baseline Scan in Emergency Room now in ICU for potential *lengthy stay*. (**Re-scan every 7-10 days**).

## Telemetry

- Patient with wound having Baseline Scan in Emergency Room now in Telemetry. (**Re-scan in 7 days**).

## Medical/Surgical

- Patient with wound having Baseline Scan in Emergency Room now on Medical/Surgical Unit. (**Depending on length of stay, will need to re-scan in 7 days**).

## A.M Admissions

- A.M. Admission with wound; (**Baseline scan with follow-up scans every 7 days**).
- A.M. Admission for wound debridement; (**Baseline and post-op scan on day 1, then every 7 days**).

## Discharge

- Patient discharged to Skilled Nursing Facility/Rehabilitation Facility (**Scan upon discharge**).
- Patient discharged to home (**No scan needed**).

*\*Scenarios subject to change based on Wound Care Team's wound assessment. Facility should develop a Policy and Procedure allowing for provisions based on Wound Care Team's judgment prior to the EPISCAN implementation.*

---

For further information please visit [www.longportinc.com](http://www.longportinc.com)

Or contact:

Longport, Inc. • Spring Valley Business Park • 2 Braxton Way, Suite 111 • Glen Mills, PA 19342

Tel: 610-675-0090

E-mail: [info@longportinc.com](mailto:info@longportinc.com)